



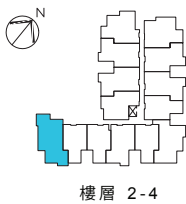
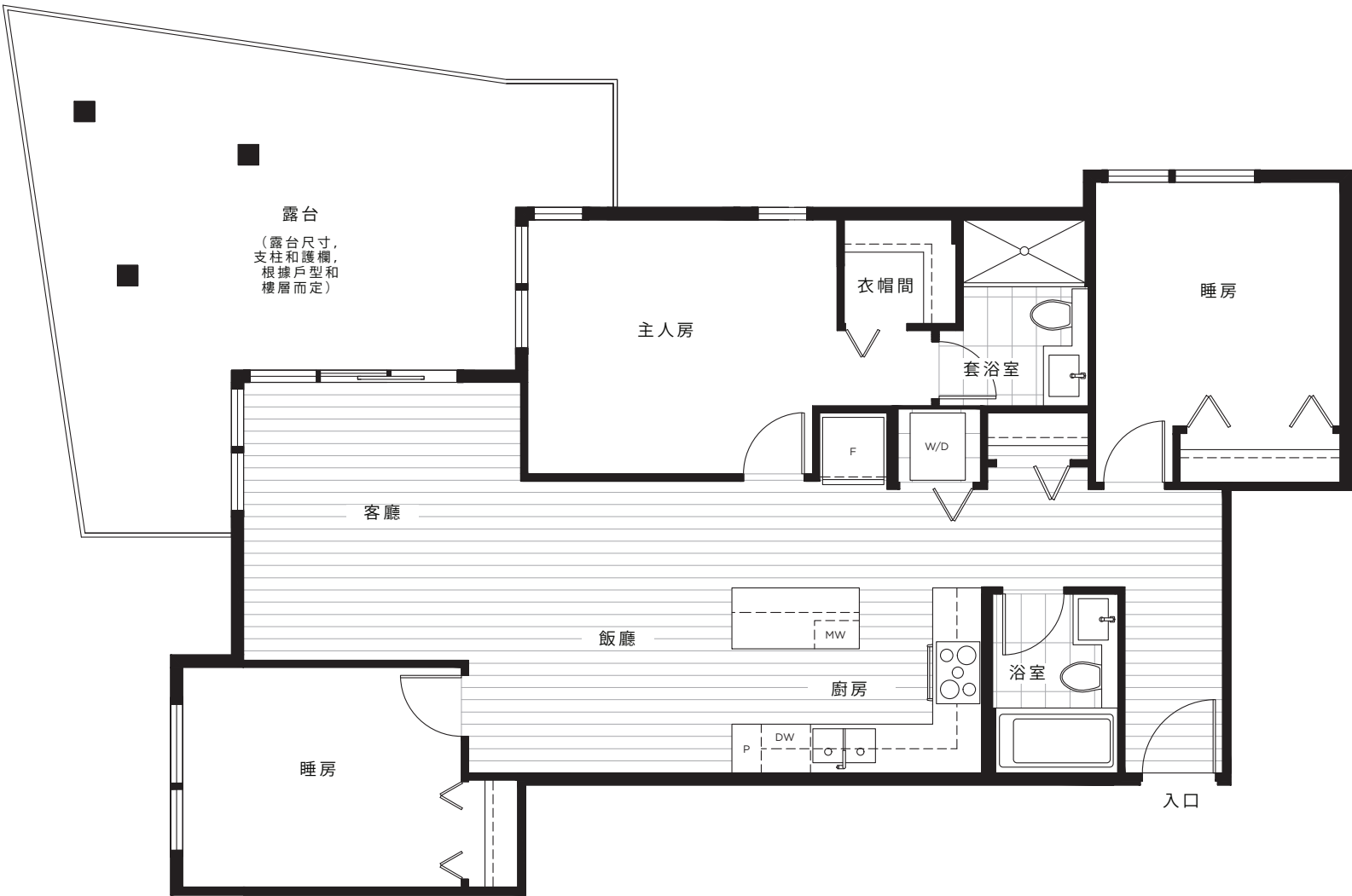
低層 - THE INDIGO 系列

3 睡房
2 浴室

A Z U R E 2

AT SOUTHGATE CITY

室內面積：約1,034平方呎
室外面積：約312平方呎
總面積：約1,346平方呎



In a continuing effort to meet the challenge of product improvements, we reserve the right to modify or change dimensions, sizes, specifications, plan orientation and materials without notice.
All patio, terrace, balcony and yard sizes may vary. Windows, columns, privacy screens, demising walls and guardrail details may vary depending upon the plan and floor level.
The quality homes at Azure 2 are built by LM Azure II Homes Limited Partnership. E. & O.E.